

# ISLAND VILLA

# 19

UNIT No.  
IV19

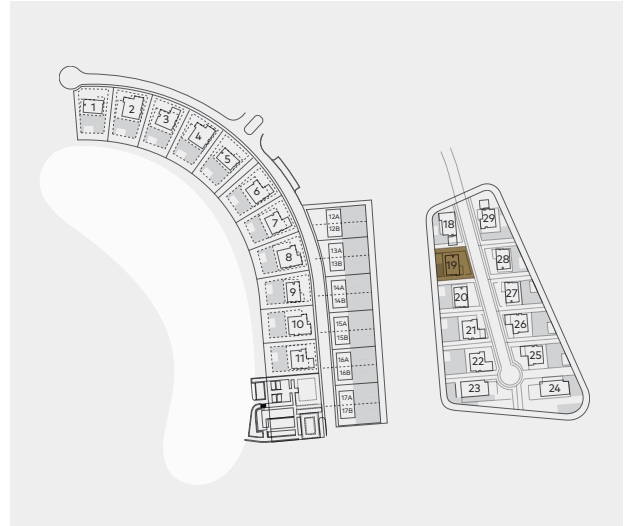
TYPE 3A

|           |   |
|-----------|---|
| BEDROOMS  | 3 |
| BATHROOMS | 4 |

|                    |  |
|--------------------|--|
| Plot area          | 529m <sup>2</sup> / 5,692ft <sup>2</sup> |
| Internal area      | 279m <sup>2</sup> / 3,002ft <sup>2</sup> |
| Lower floor        | 150m <sup>2</sup> / 1,614ft <sup>2</sup> |
| Total unit area    | 429m <sup>2</sup> / 4,616ft <sup>2</sup> |
| Covered verandas   | 83m <sup>2</sup> / 893ft <sup>2</sup>    |
| Uncovered verandas | 89m <sup>2</sup> / 958ft <sup>2</sup>    |
| Roof garden        | 130m <sup>2</sup> / 1,399ft <sup>2</sup> |
| Swimming pool      | 26m <sup>2</sup> / 280ft <sup>2</sup>    |
| Garage             | 2 cars                                   |
| Extra WC           | 1  |
| Finishes palette   | Sand                                     |



Berth size 1 x 15m



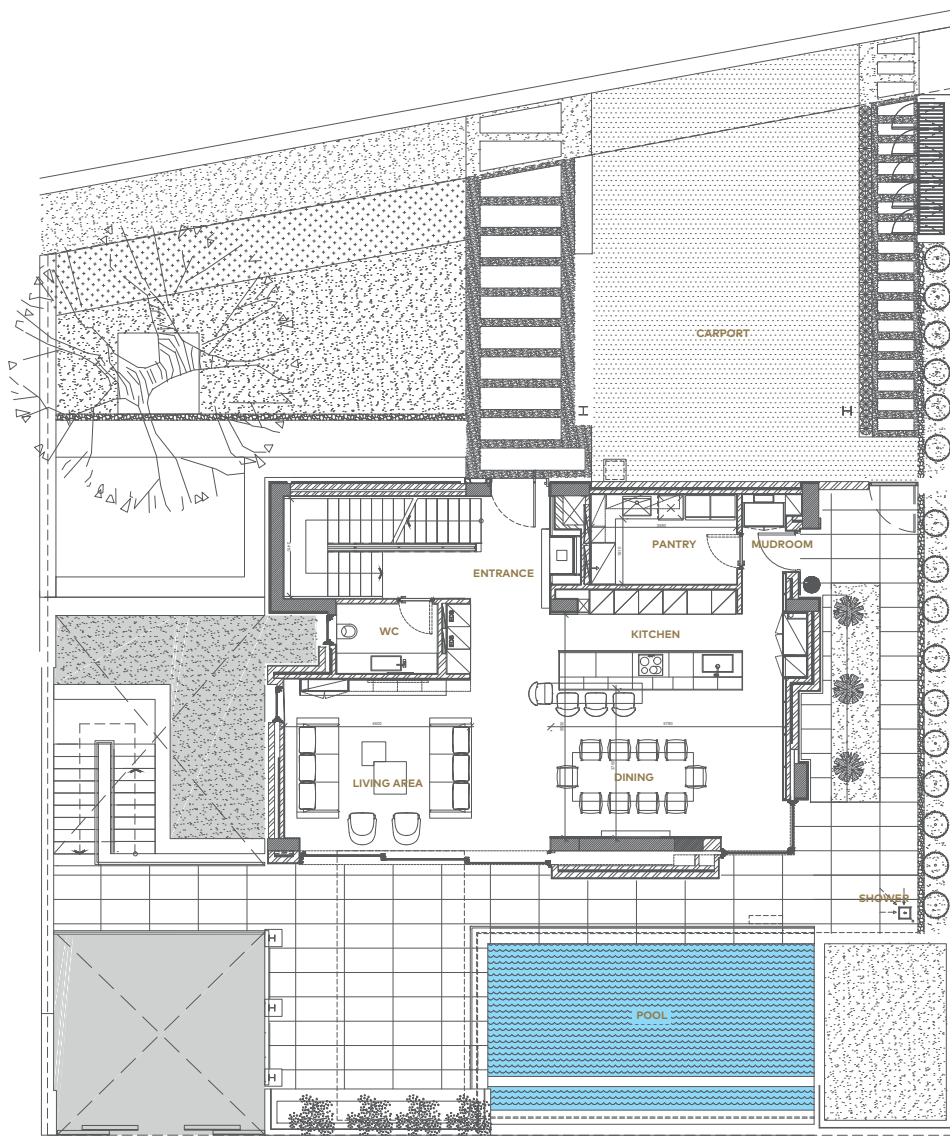
# ISLAND VILLA

# 19

UNIT No.  
IV19

TYPE 3A

GROUND FLOOR



# ISLAND VILLA

# 19

UNIT No.  
IV19

TYPE 3A  
FIRST FLOOR

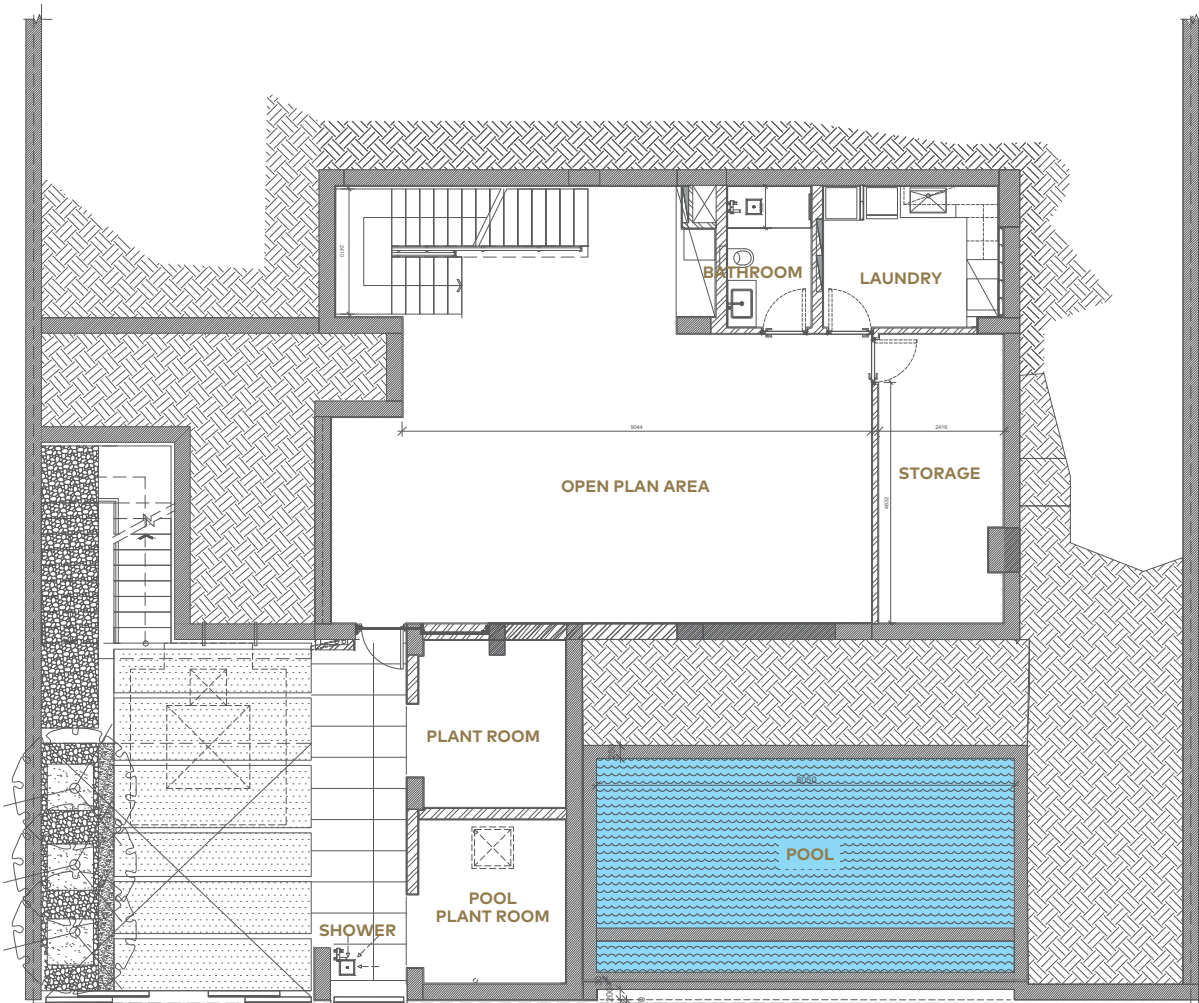


ISLAND  
VILLA

19

UNIT No.  
IV19

TYPE 3A  
LOWER FLOOR



ISLAND  
VILLA

19

UNIT No.  
IV19

TYPE 3A

ROOFTOP GARDEN

