

ISLAND VILLA

27

UNIT No.
IV27

TYPE 3A

BEDROOMS 3

BATHROOMS 4

| | |
|--------------------|--|
| Plot area | 652m ² / 7,016ft ² |
| Internal area | 279m ² / 3,002ft ² |
| Lower floor | 156m ² / 1,679ft ² |
| Total unit area | 435m ² / 4,681ft ² |
| Covered verandas | 119m ² / 1,280ft ² |
| Uncovered verandas | 183m ² / 1,969ft ² |
| Roof garden | 130m ² / 1,399ft ² |
| Swimming pool | 35m ² / 377ft ² |
| Garage | 2 cars |
| Extra WC | 1 |
| Finishes palette | Sand |



Berth size 1 x 15m



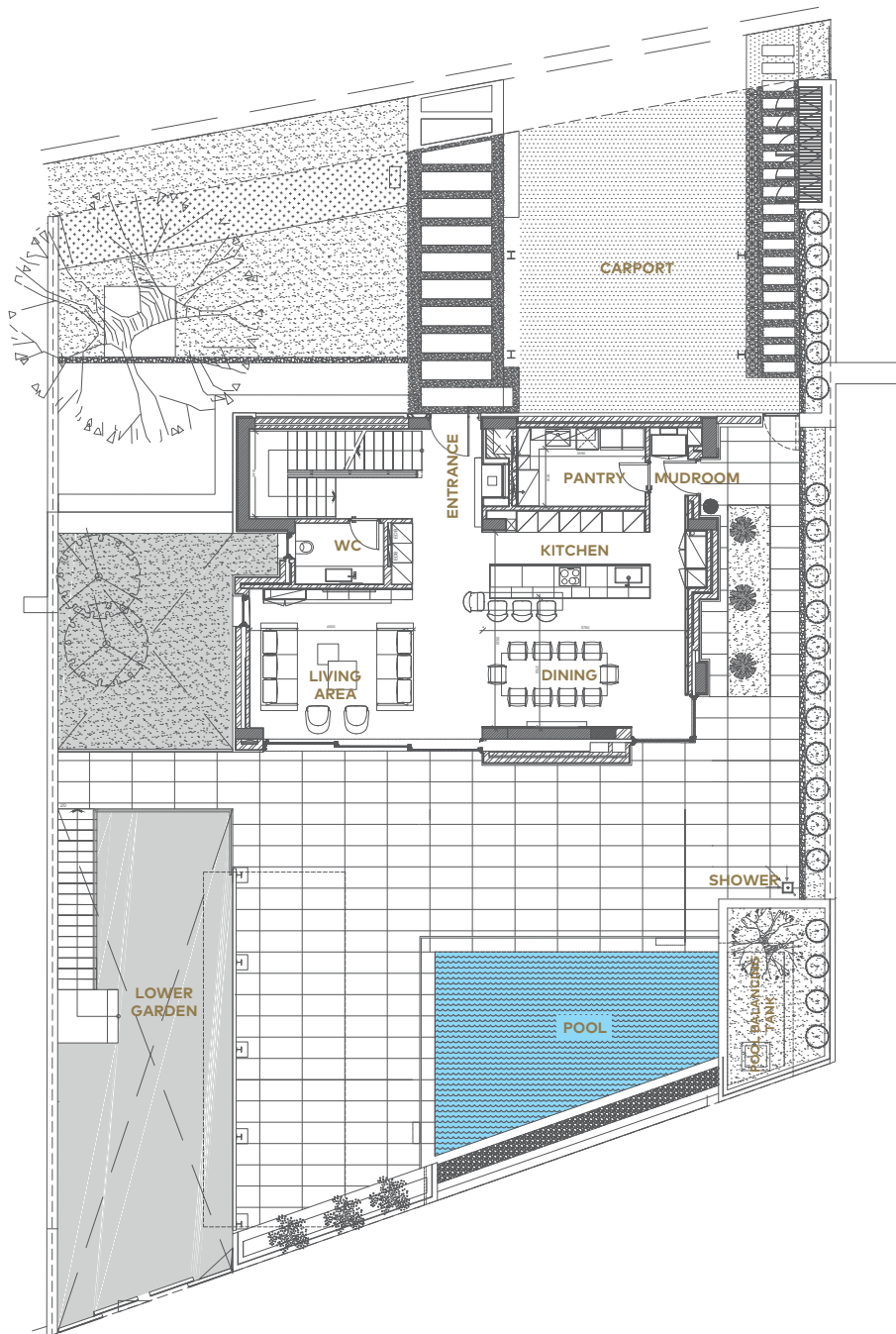
ISLAND VILLA

27

UNIT No.
IV27

TYPE 3A

GROUND FLOOR



ISLAND VILLA

27

UNIT No.
IV27

TYPE 3A
FIRST FLOOR

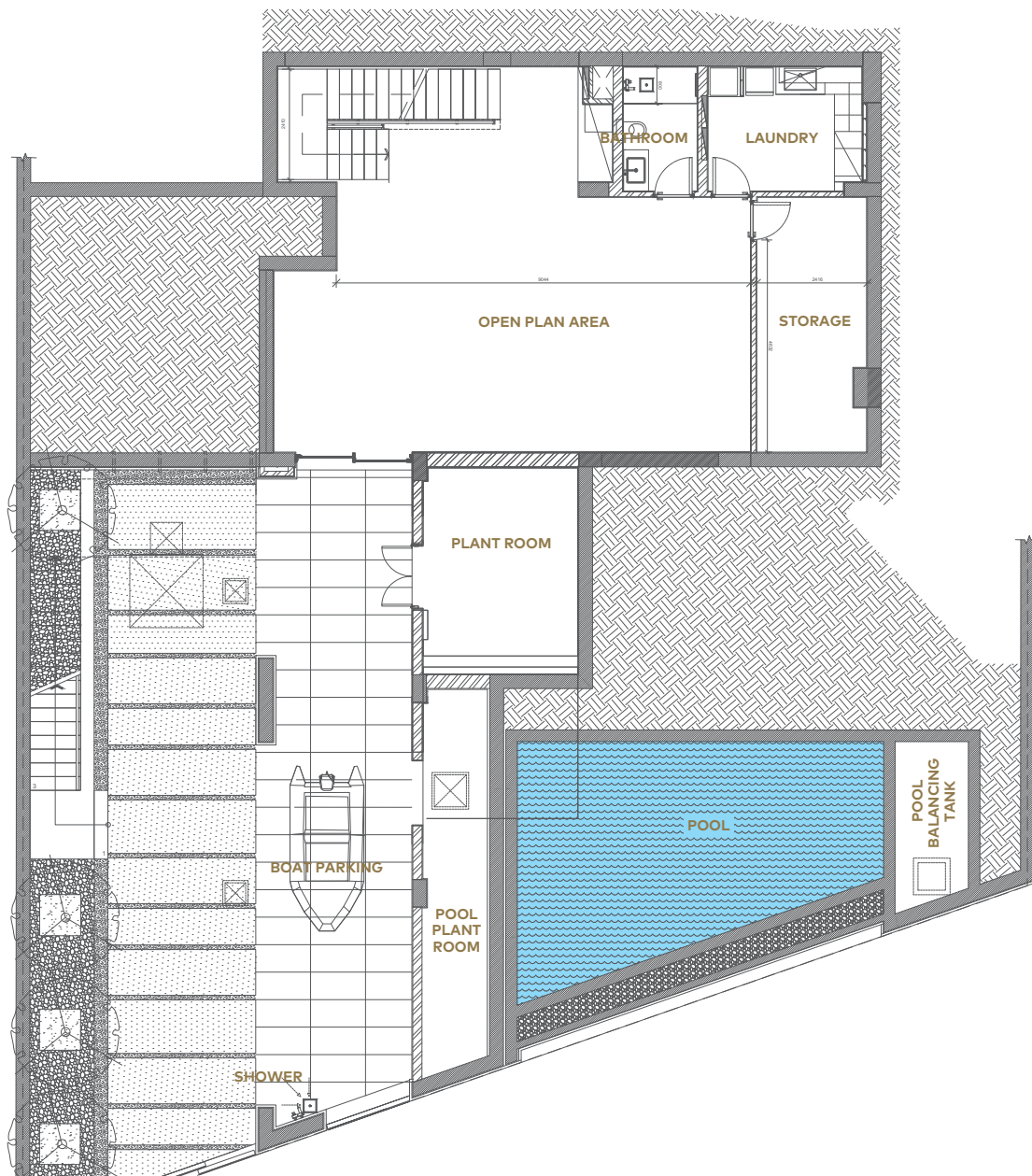


ISLAND
VILLA

27

UNIT No.
IV27

TYPE 3A
LOWER FLOOR



ISLAND VILLA

27

UNIT No.
IV27

TYPE 3A

ROOFTOP GARDEN

