

# ISLAND VILLA

# 28

UNIT No.  
IV28

TYPE 3A

BEDROOMS 3

BATHROOMS 4

Plot area	620m <sup>2</sup> / 6,671ft <sup>2</sup>
Internal area	279m <sup>2</sup> / 3,002ft <sup>2</sup>
Lower floor	154m <sup>2</sup> / 1,657ft <sup>2</sup>
Total unit area	433m <sup>2</sup> / 4,659ft <sup>2</sup>
Covered verandas	107m <sup>2</sup> / 1,151ft <sup>2</sup>
Uncovered verandas	162m <sup>2</sup> / 1,743ft <sup>2</sup>
Roof garden	130m <sup>2</sup> / 1,399ft <sup>2</sup>
Swimming pool	30m <sup>2</sup> / 323ft <sup>2</sup>
Garage	2 cars
Extra WC	1
Finishes palette	Sand



Berth size 1 x 15m



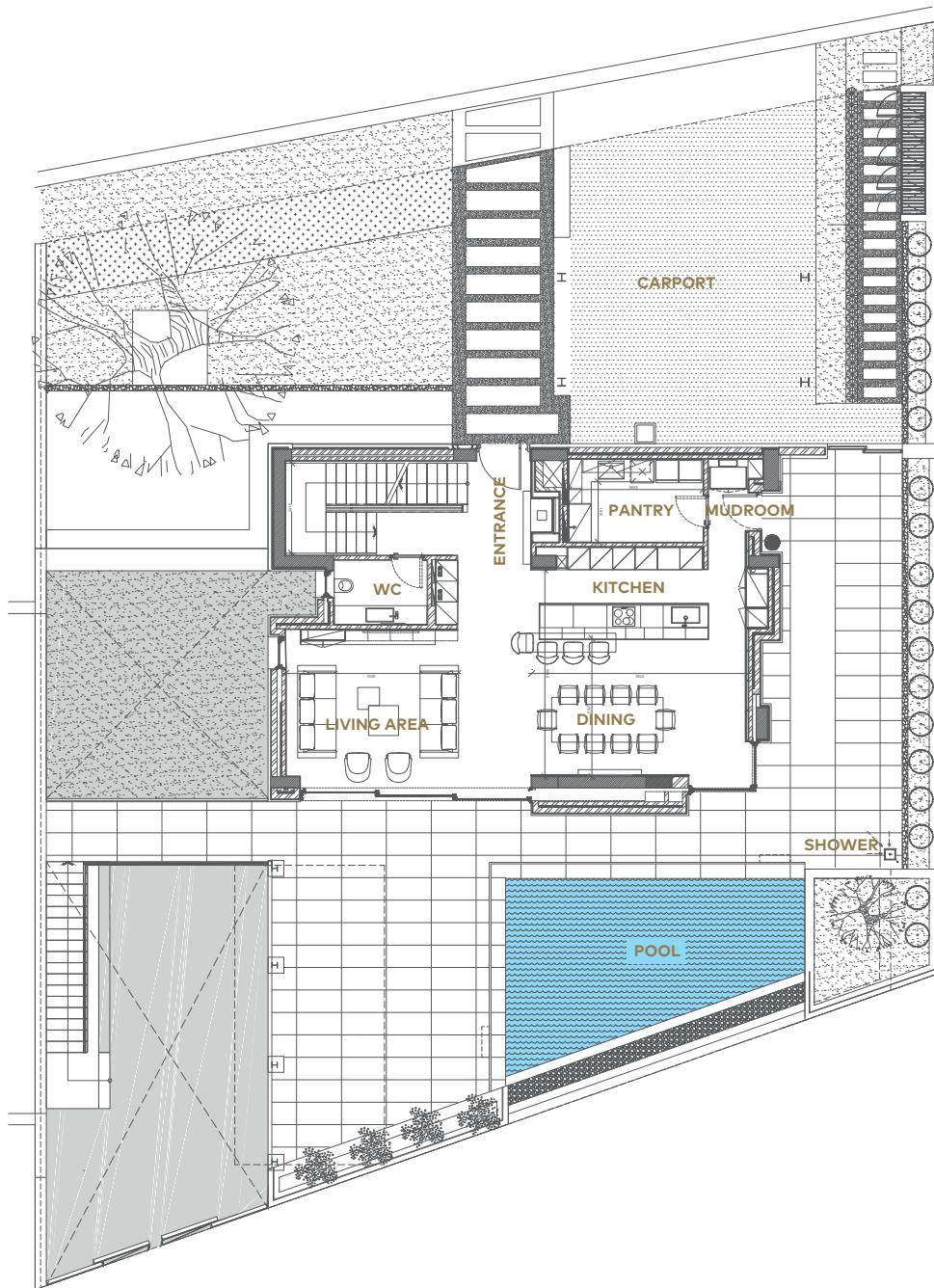
ISLAND  
VILLA

28

UNIT No.  
IV28

TYPE 3A

GROUND FLOOR



# ISLAND VILLA

# 28

UNIT No.  
IV28

TYPE 3A  
FIRST FLOOR



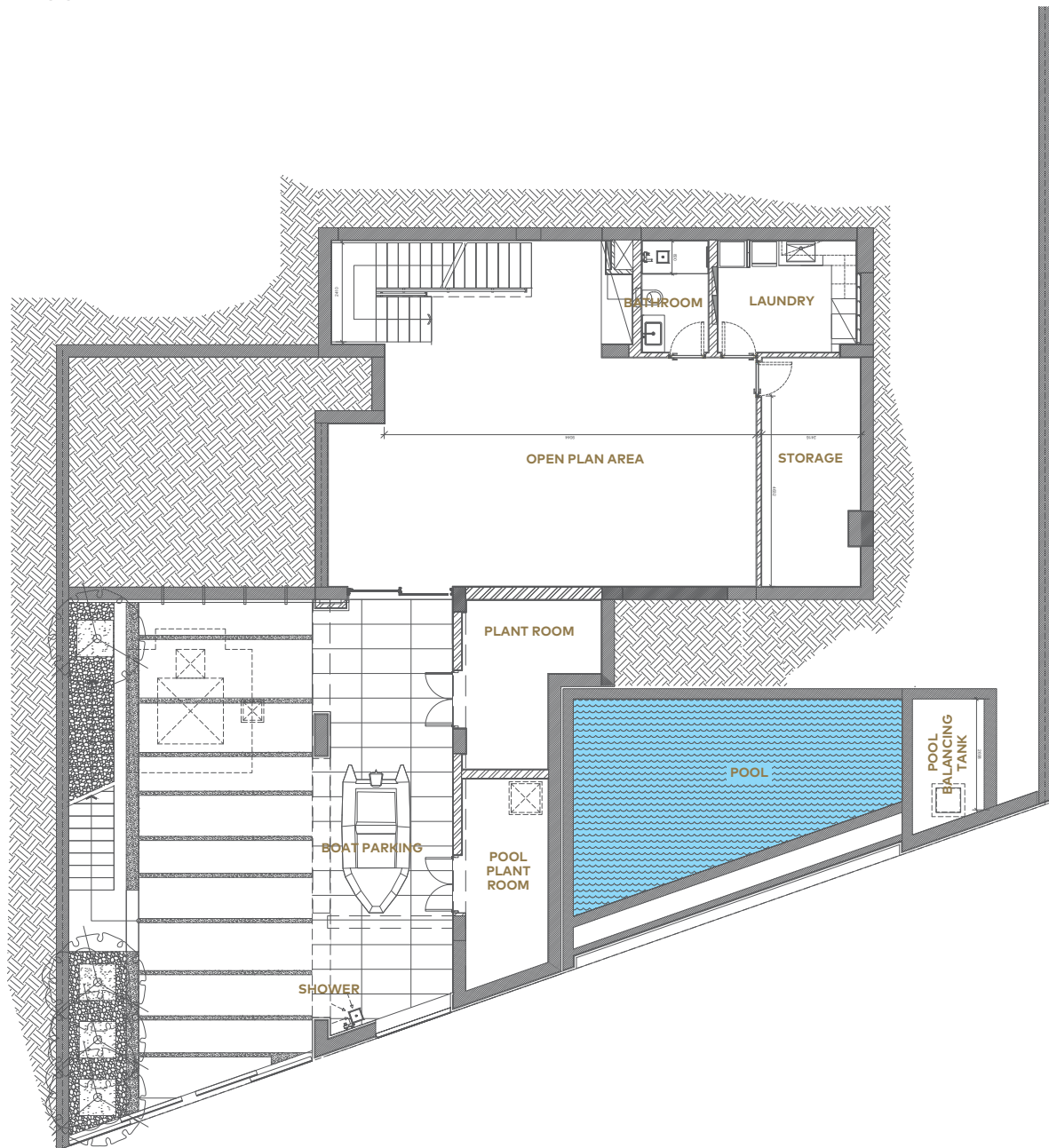
# ISLAND VILLA

# 28

UNIT No.  
IV28

TYPE 3A

LOWER FLOOR



# ISLAND VILLA

# 28

UNIT No.  
IV28

TYPE 3A

ROOFTOP GARDEN

